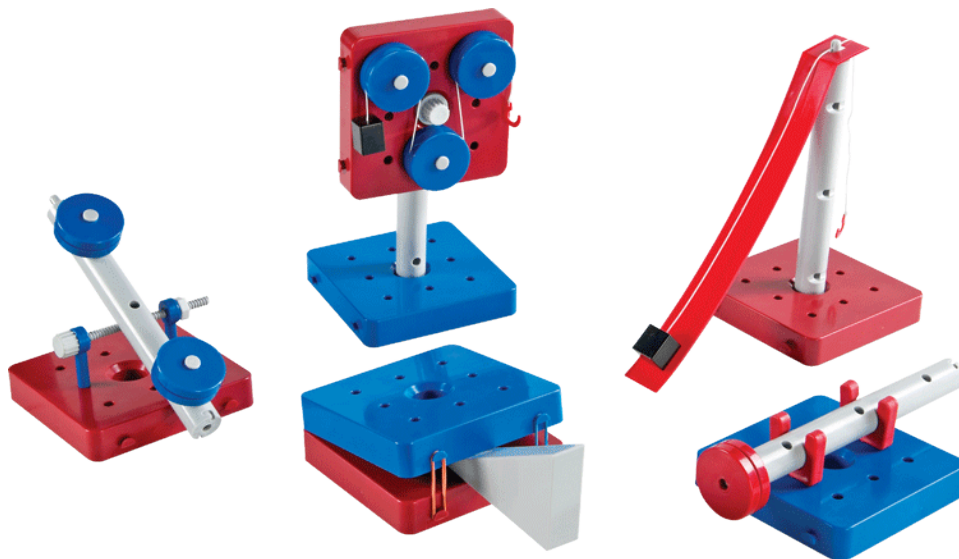


# Simple Machines



Name: \_\_\_\_\_

# Lever



A diagram of a first-class lever. A horizontal beam is balanced on a central fulcrum, represented by a grey rock. A large black arrow points downwards from the left end of the beam, indicating the effort. A smaller black arrow points upwards from the right end of the beam, indicating the load. The word "Lever" is written in a large, blue, serif font above the beam.

[illegible]

# How Simple Machines Affect Our Lives

Some simple machines add enjoyment to our lives (e.g., the wheel and axle on devices such as skateboards, the lever on devices such as teeter totters and the keys on a piano). However, other simple machines are used to make life easier (e.g., the wheel and axle of a car). The use of simple machines to make life easier has created a more sedentary lifestyle (meaning a lifestyle with little or no physical activity) that has created health problems for many humans.

Simple machines can also impact the environment, which also affects us. The impact of simple machines on the environment can be both positive and negative. In the space below you are to describe how you think simple machines can affect the environment in both a positive and a negative way.

How does it make things easier for us?

---

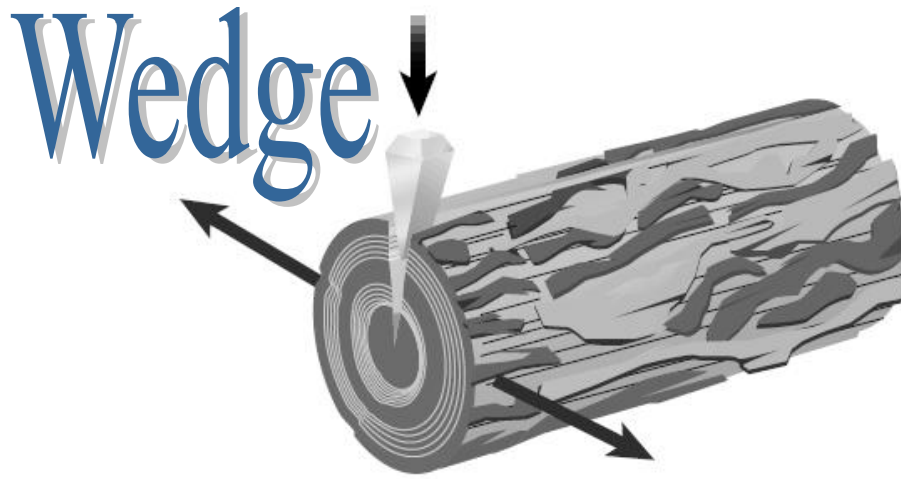
---

---

---

Here are some examples:

--	--	--



What is a wedge?

---

---

---

---

How does it make things easier for us?

---

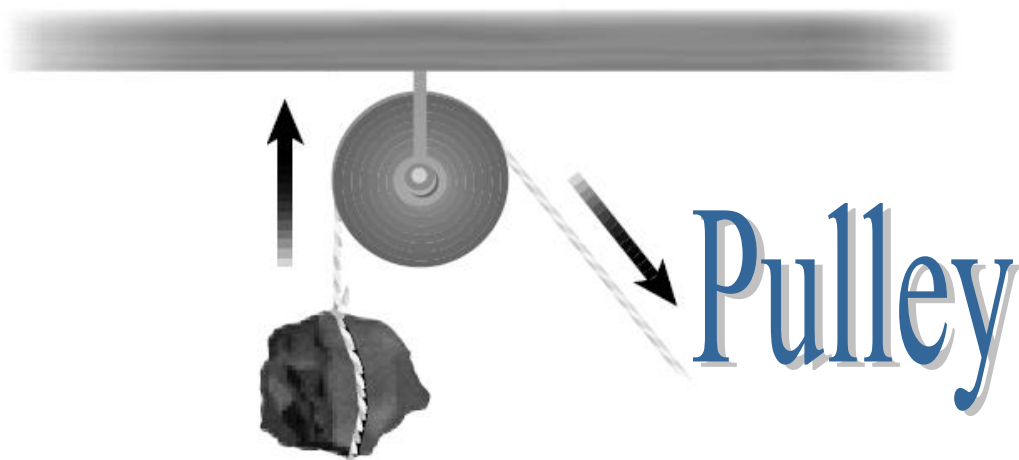
---

---

---

Here are some examples:

--	--	--



What is a pulley?

---

---

---

---

How does it make things easier for us?

---

---

---

---

Here are some examples:

--	--	--



# Screw

What is a screw?

---

---

---

---

How does it make things easier for us?

---

---

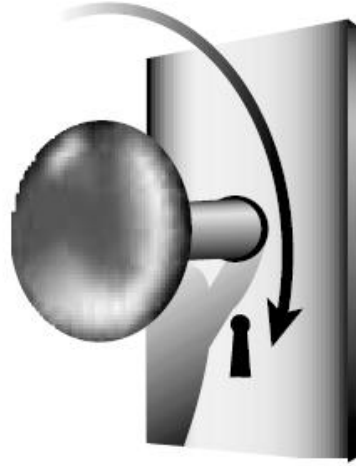
---

---

Here are some examples:

--	--	--

# Wheel and Axle



What is a wheel and axle?

---

---

---

---

How does it make things easier for us?

---

---

---

---

Here are some examples:

--	--	--

# Inclined Plane



What is an inclined plane?

---

---

---

---

How does it make things easier for us?

---

---

---

---

Here are some examples:

--	--	--